



SLONEPARTNERS²⁵
PEOPLE ARE OUR SCIENCE[®]

Head of AI

DNAnexus[®]

COMPANY OVERVIEW

DNAexus

Our Vision

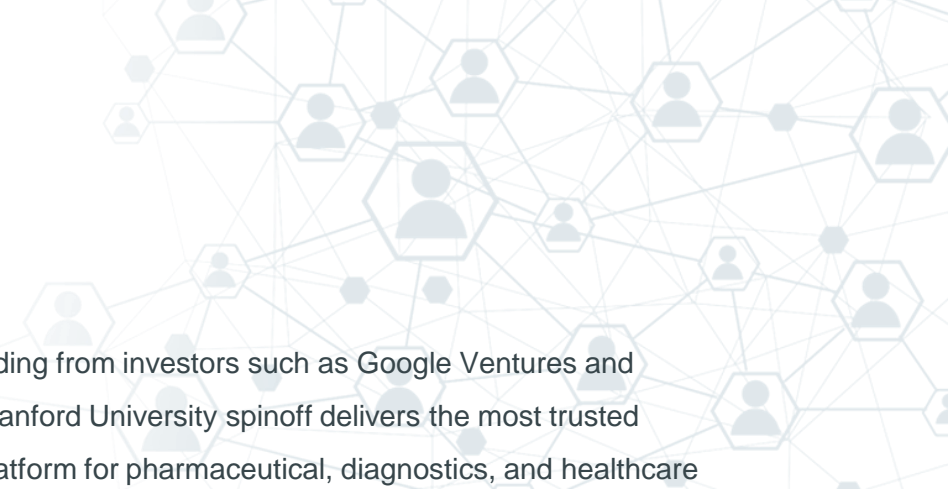
To make precision health a reality for all.

Our Mission

DNAexus is the enterprise platform for precision health. We are on a mission to accelerate the development, approval and delivery of personalized treatments.

Who We Are

We are scientists, engineers, cloud experts, compliance specialists, and thought leaders dedicated to the acceleration of scientific discovery. The work we do enables the world's most important breakthroughs in health science, the development of life-saving cures, and access to critical data needed for new discovery. We are a passionate group constantly pursuing the most innovative solutions and partnerships that are shaping the future of health.



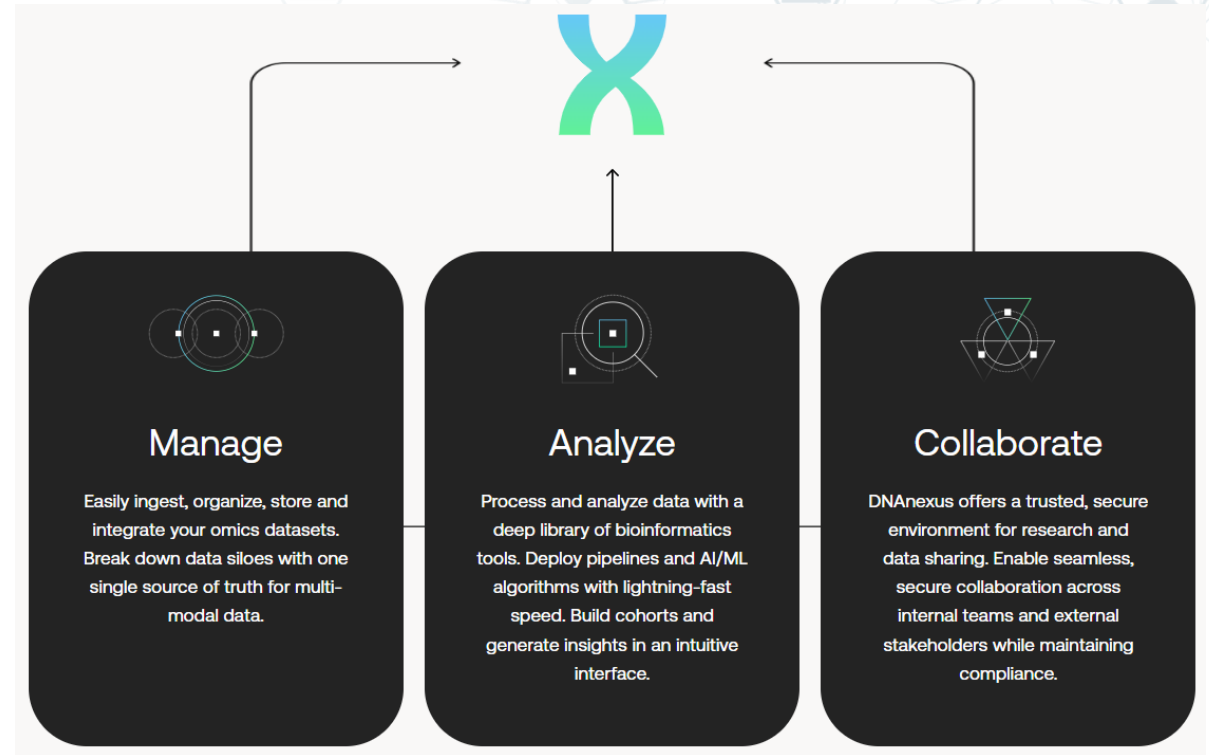
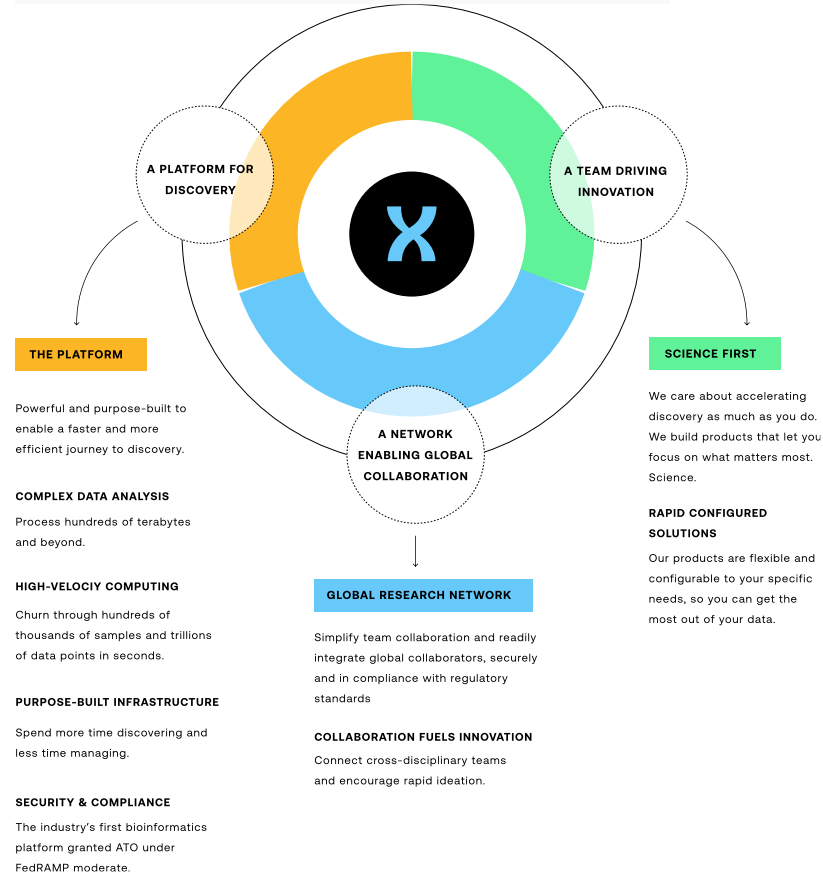
With \$475M in funding from investors such as Google Ventures and Blackstone, this Stanford University spinoff delivers the most trusted precision health platform for pharmaceutical, diagnostics, and healthcare organizations worldwide to over 40,000 scientists across 48 countries. At DNAexus, we harness omics intelligence by aggregating more than 100 petabytes of clinicogenomic data and making it actionable and secure. Powered by AI, omics intelligence provides a holistic, systems-level understanding of how genes, proteins, metabolites, and other molecules interact within cells, tissues, and organisms, accelerating scientific discovery and the development of targeted therapies.

COMPANY OVERVIEW

DNAnexus

We Future Proof Your Research

A scalable, secure & compliant cloud platform at the forefront of innovation.



COMPANY OVERVIEW

DNAexus

Why are we here?

DNAexus in pole position to house all omics of the world

- Stanford spin-off (2009)
- Founder (George Asimemos) involved in the Human Genome sequencing project
- Backed by nearly \$500M, investors such as Google and Blackstone
- Pedigree leadership
- Largest Omics cloud in the world (>100PB)
- > 40,000 users, 48 countries
- Strategic interest from Big Tech and Governments



Source: Pole Position, Atari, 1982

COMPANY OVERVIEW

DNAexus

Unfolding the mystery of biology with clinico-genomic data

Deep Space



© 2024 DNAexus, Inc. All Rights Reserved

“Deep Biology”



Deep Sea



//

LEADERSHIP



Thomas Laur
Chief Executive Officer



George Asimenos, PhD
Chief Product Officer



James McNicholas
Chief Financial Officer



Bill Madigan
Chief Commercial Officer



Omar Serang
Chief Cloud Officer



Kelly Green
Chief People Officer



Pieter De Leenheer
Chief Technology Officer



Amber Johnson
SVP, Strategy & Enterprise
Operations



Jeff Keller, PhD
SVP, General Manager
Health Centers

Partners

CLIENT PARTNERS

ORACLE

aws

Microsoft

SERVICE PARTNERS

accenture

Cognizant

EPISTA
LIFE SCIENCE

Zifo

TECHNOLOGY PARTNERS

Lorenz
LIFE SCIENCES GROUP

Intelliseq

FABRIC
GENOMICS

NVIDIA

BigOmics
Analytics

Sentieon

DATA & BIOBANK PARTNERS

biobank^{uk}
Enabling scientific discoveries that improve human health

+
Our
Future
Health

ovation


TMA
PRECISION HEALTH

Read about our most recent [fundraising](#) round.


INFORMATION ABOUT THE POSITION

Position Scope and Location: **Head of AI**



 **Location:** Ideally Boston, San Francisco, or the Czech Republic, but flexible for the right person

 **Reports to:** [Pieter De Leenheer, CTO](#)

 **Key Relationships:** CEO, CTO, CPO, executive team, product team, engineering

As the Head of AI, you will report to the Chief Technology Officer. You will define and execute our long-term AI vision within the fast-evolving multiomics and precision health data space. You will be responsible for defining and executing the long-term AI vision, leading end-to-end research and development, scaling our AI capabilities from R&D through product integration, and building a world-class team of researchers, engineers, and data scientists. As Head of AI you will champion the company's AI-first journey and be our thought leader.

INFORMATION ABOUT THE POSITION

Major Responsibilities

➤ Strategic Leadership:

- Develop and drive the AI research roadmap aligned with company strategy in omics and precision health.
- Identify breakthrough AI opportunities and translate them into scalable products and services.

➤ GenAI & LLM Expertise:

- Architect, train, deploy, and evaluate large language models and generative AI systems—owning the full ML lifecycle (ModelOps, inference pipelines, monitoring, and continual improvement).

➤ Team Building & Management:

- Recruit, mentor, and inspire a high-performing team of AI researchers, research engineers, and data scientists.
- Establish best practices for project planning, code review, and model validation; foster a culture of scientific rigor and cross-functional collaboration.

➤ Enterprise & Startup Expertise:

- Leverage experience from both large organizations and high-growth startups to balance rigor with agility.
- Partner closely with product, engineering, and business teams to accelerate AI adoption across enterprise clients.

➤ Stakeholder Engagement:

- Act as the primary AI evangelist for internal and external audiences, including executive briefings, customer engagements, and industry conferences.
- Collaborate with regulatory, clinical, and security teams to ensure compliance in handling sensitive health data.

INFORMATION ABOUT THE POSITION

Position Requirements and Experience

➤ **Background:**

- Bachelor's degree in Computer Science, AI/ML, Bioinformatics, Computational Biology, or related field/experience. Advanced degree preferred.

➤ **Enterprise-grade AILLM & GenAI Hands-On Experience:**

- Demonstrated success training, fine-tuning, deploying, and evaluating large language and generative models in production.
- Deep understanding of ModelOps best practices, inference optimization, and A/B evaluation frameworks.
- Deep understanding of the emerging AI stack in terms of agentic orchestration systems and context sharing protocols (MCP, A2A, AITP, ANP, Agora), containerization, orchestration, observability, and model evaluation.

➤ **Leadership & Management:**

- 10+ years of progressive experience managing technical teams (including managers of managers), with a demonstrated ability to scale teams from startup phase through enterprise maturity. Ideal background would include global leadership.
- Strong people-management skills: hiring, performance coaching, career development, and organizational design.

➤ **Domain Expertise:**

- Hands-on experience applying AI/ML techniques to omics, genomics, or precision health datasets is preferred.
- Deep familiarity with end-to-end ML pipelines: data acquisition, preprocessing, modeling, validation, and deployment.

➤ **Industry Experience:**

- Track record of shipping AI-driven products in both enterprise settings and nimble startup environments.
- Comfortable navigating complex stakeholder landscapes, including C-suite, clinical partners, and external regulators.

➤ **Communication & Influence:**

- Excellent written and verbal communication skills, with experience presenting at technical conferences and to non-technical executives.
- Ability to distill complex research into clear business value propositions.
- Respected within the wider AI/engineering community. Well-regarded leader.

INFORMATION ABOUT THE POSITION

Attributes of Interest

- Experience securing and managing research grants or partnerships with academic institutions, including organization of cross-institution workshops and conferences.
- Demonstrated success in securing patents or leading open-source AI initiatives.
- Familiarity with regulatory frameworks (e.g., HIPAA, GDPR) and clinical validation processes.
- Prior global team leadership across multiple time zones.
- Experience leading cutting-edge research efforts and contributing to top-tier AI, ML, and NLP conferences and journals.
- Background championing publications to establish the company as an industry thought leader.

WHY JOIN US?

You'll have the opportunity to shape the future of precision health through pioneering AI and GenAI research, build and scale an elite AI organization, and see your work directly impact patient outcomes and scientific discovery. If you're a visionary AI leader with a passion for LLMs, omics data, and health innovation, this could be the perfect role.

<https://www.dnanexus.com/company#>

**If interested in the position, please reach out to
kimd@slonepartners.com**


BIOGRAPHY



Kim Wilson

SVP, Executive Search & Partner

 kimd@slonepartners.com

 Direct: 817.494.3225

Mobile: 817.919.7269

Kim Wilson serves as Senior Vice President, Executive Search and Partner at Slone Partners. Kim's approach to executive search begins with taking the time to understand the business of our clients, the challenges their leaders are facing, and their strategic goals. Using these insights, she delivers the right people in a way that truly aligns with each client's company culture and reflects the goals she has been asked to help them achieve. Kim has been instrumental in building high-performance leadership teams in start-ups, turnarounds, and well-established organizations. She has a proven track record of identifying and aligning leaders with companies that are publicly traded, private equity and venture capital-backed, and nonprofit. With more than twenty years of experience in the healthcare and life sciences industries, Kim is an expert on talent in biotech, life sciences, diagnostics, healthcare, digital health, and medical technology sectors. Prior to joining Slone Partners, she worked in commercial roles with Quest Diagnostics, Cardinal, and McKesson.

Kim consistently delivers exceptional executive leaders in the areas of operations, finance, commercialization, legal, clinical, scientific, reimbursement, regulatory affairs, and more. She places key strategic leaders from the VP level to the C-suite and boardroom.

A native Texan, Kim is a Dallas Cowboys fan and enjoys spending time reading, gardening, traveling, and cooking. She studied Communications at Dallas Baptist University.

SLONE PARTNERS LEADERSHIP



ADAM SLONE
Founder & Chairman



LESLIE LOVELESS
co-Chief Executive
Officer
& Managing Partner



ERIC FINK
co-Chief Executive Officer
& Managing Partner



ALICIA MONTGOMERY
Chief Recruiting &
Talent Officer



KIM FEITOSA
SVP, Executive Search
& Partner



JENNIFER LEMASTERS
SVP, Executive Search
& Partner



SONA STROUD
SVP, Executive Search
& Partner



KIM WILSON
SVP, Executive Search
& Partner



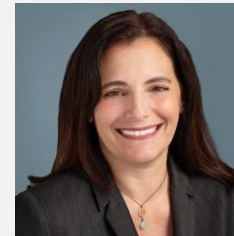
LORI LUCAS
Vice President, Marketing



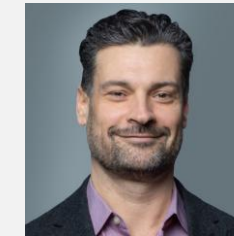
SHAWN ADAMS
Director, Executive Search



COLLEEN CREMEN
Director, Executive Search



CLAUDINE FASSE
Director, Executive Search



ANDREY MYKETEJ
Business Development Lead,
Fractional Talent